

BMS Event Information Guide

TABLE OF CONTENTS

Accessing Wi-Fi	1
Pre-function Room Layout	2
Parking	3
Where to Stay	4
What to Eat.....	5
Transportation	6

ACCESSING WI-FI

How do event attendees receive Wi-Fi for the event?

Event attendees will receive an email from BMS about 1-2 days prior to the event. The email will be under the address of **donotreply-ise@bms.com** with the subject line of “Your Guest Account Credentials”. That email will include their username and password to log into the BMS public Wi-Fi network. The credentials will be good for 15 days from when they first log in.

My attendee(s) cannot find the BMS email with their Wi-Fi credentials. Why is that and where can they find it?

Sometimes, companies will automatically have emails from third parties sent to the company’s spam/junk folder for security reasons. Have your attendee(s) check their spam/junk folder before the event.

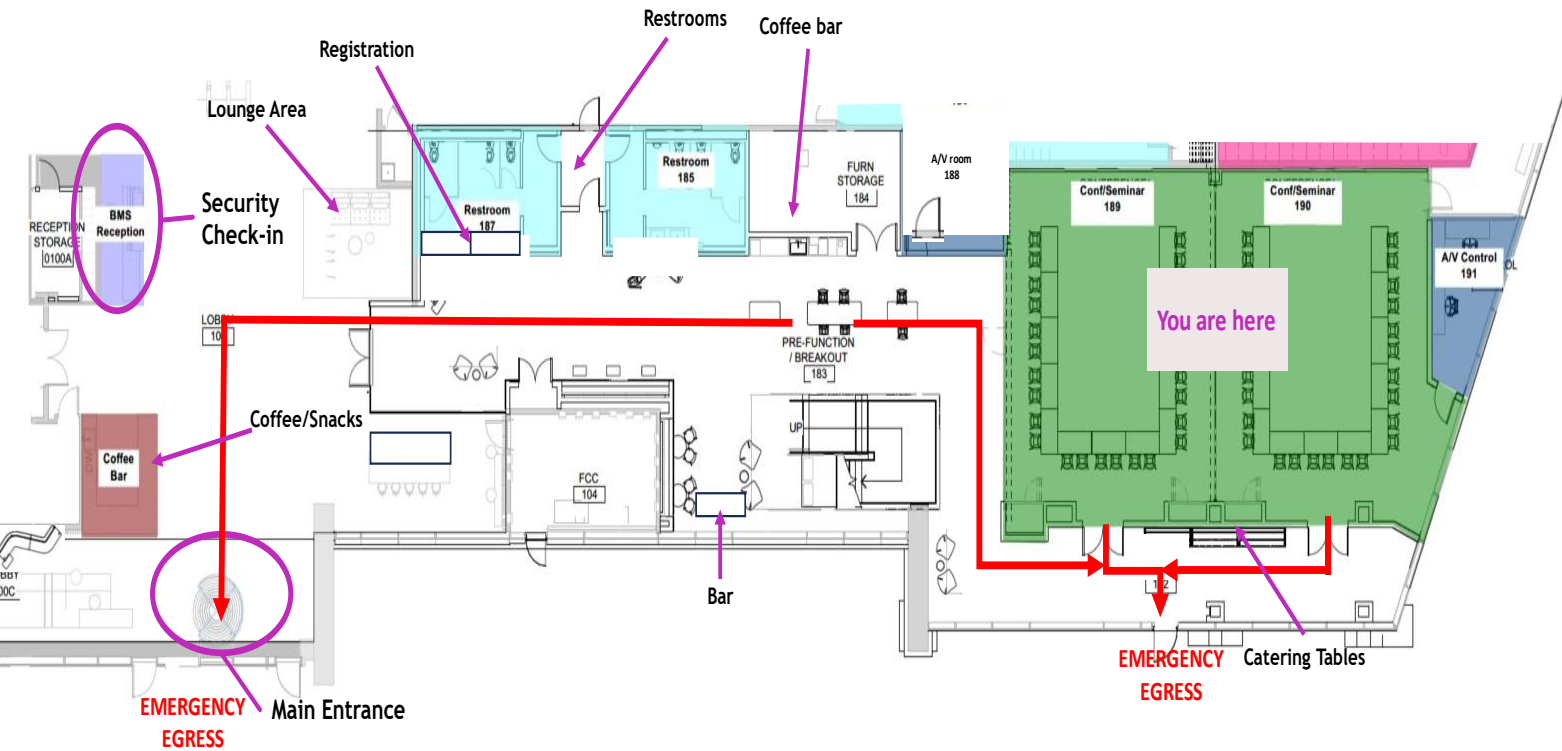
My attendee(s) still cannot find the email for Wi-Fi. What can they do?

If they still cannot find the email from BMS with their Wi-Fi credentials, then once they arrive on site, they can visit the front desk and will receive the help they need.

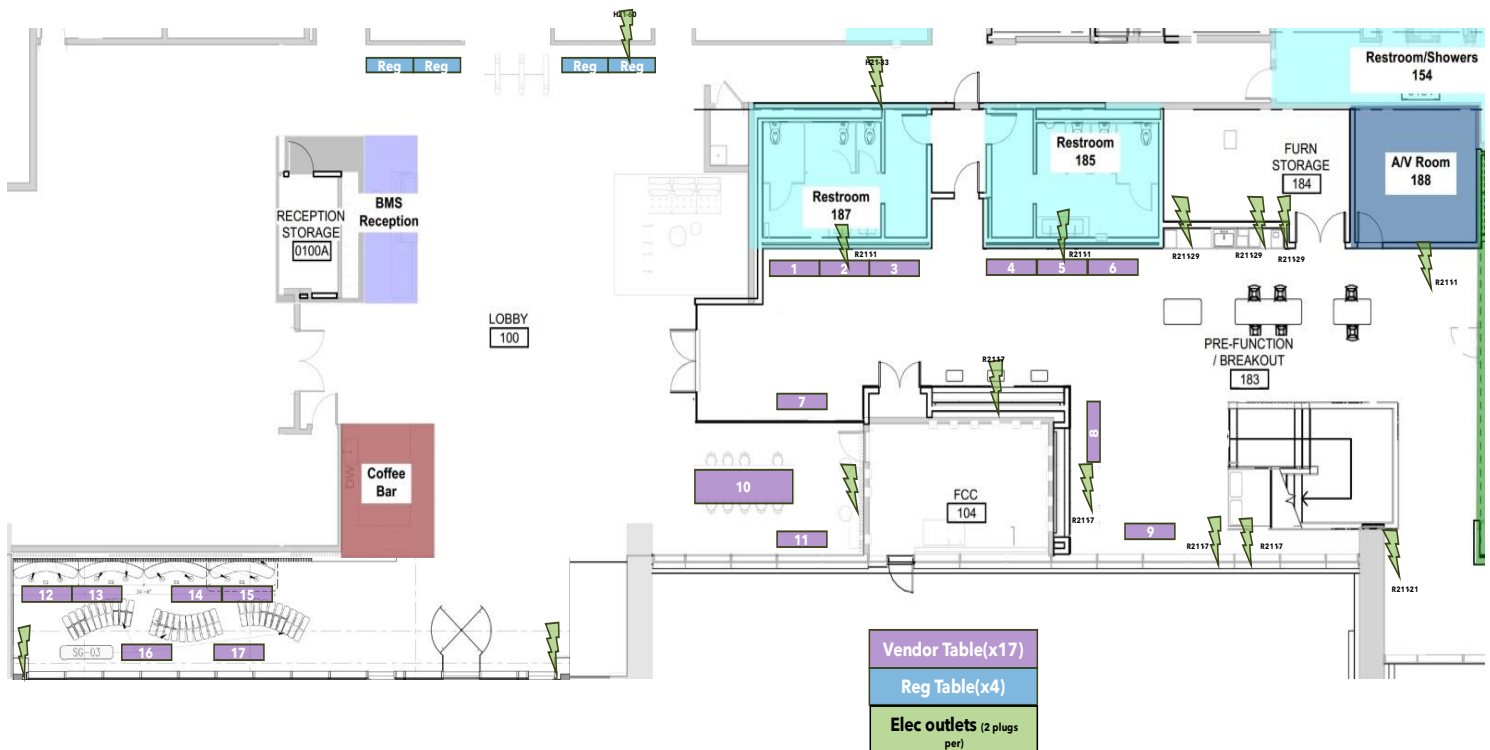
PRE-FUNCTION ROOM LAYOUT

What is the layout of the event space?

First Floor Site Orientation



1st Floor Vendor Fair Layout



PARKING

What are the parking garage options for event attendees?

Event attendees can park several places that are within walking distance to the building.

Garages include:

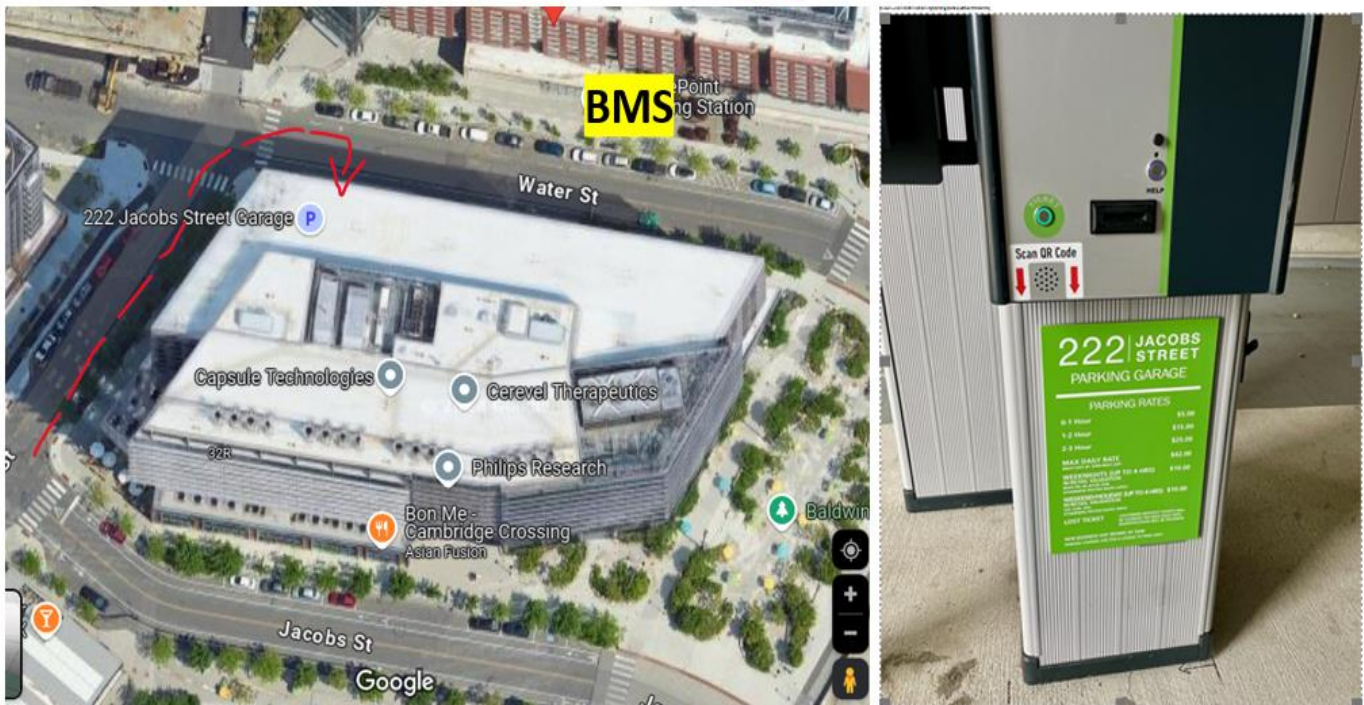
- **222 Jacobs Street Garage** (Open only AFTER 11 am)
211 Water Street, Cambridge, MA
- **2 Canal Park**
First Street, Cambridge, MA (Public Parking on Cambridge St.)
- **First Street Garage**
35 First Street, Cambridge, MA (Entrance on Spring St)
- **Cambridge Side Galleria Upper & Lower Garages**
88 Fist St, Cambridge MA
- **Museum of Science Parking**
1 Museum of Science Driveway, Boston, MA

How far away are the other parking garages to BMS?



222 Jacobs St Garage

Entrance located on 211 Water St; open to public after 11 am



WHERE TO STAY

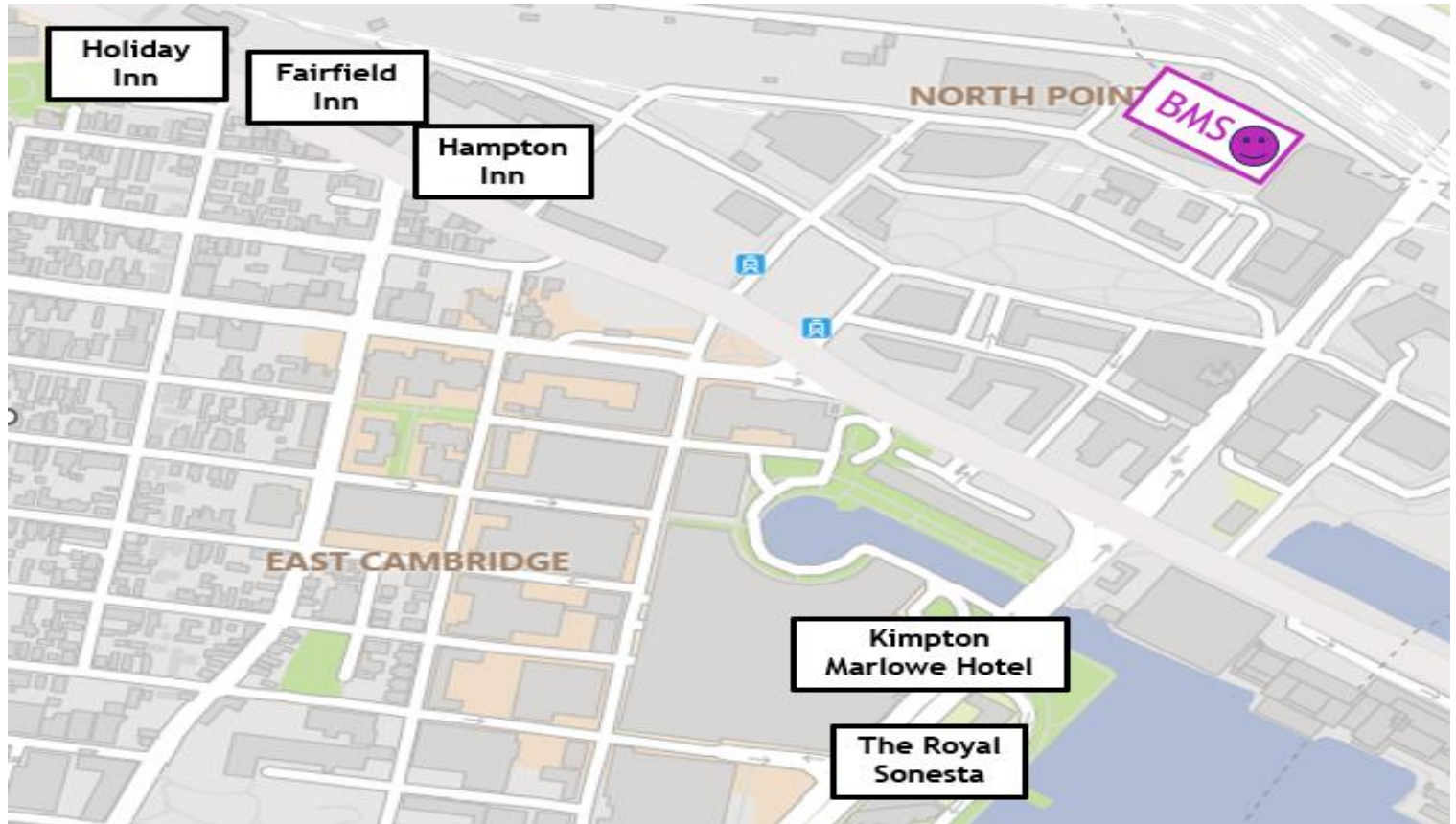
What hotels options are available?

There are several different places to stay around Cambridge that are close to BMS.

Some Hotel options are:

- **Holiday Inn Express & Suites Boston - Cambridge (3 Star)**
250 Monsignor O'Brien Highway, Cambridge, MA
- **Fairfield Inn & Suites Boston Cambridge (3 Star)**
215 Monsignor O'Brien Highway, Cambridge, MA
- **Hampton Inn Boston / Cambridge (3 Star)**
191 Monsignor O'Brien Highway, Cambridge, MA
- **Kimpton Marlowe Hotel (4 Star)**
25 Edwin H Land Blvd, Cambridge, MA
- **The Royal Sonesta (4 Star)**
40 Edwin Land Boulevard, Cambridge, MA

How far away are the hotels from BMS?



WHAT TO EAT

What are the food catering options?

There are several different catering vendors that we at BMS often order food from and are beloved favorites.

Some Catering options are:

<u>Name of Catering</u>	<u>Phone Number</u>	<u>Website / Email</u>
Sodexo (In - house)	N/A	David.Farbaniec@sodexo.com
Tatte Bakery & Cafe	(617)-945-1205	https://tatebakery.com/catering/
Baker's Best	(617)-332-4588	https://www.bakersbestcatering.com/
Flour Bakery	(857)-449-7452	https://www.flourbakery.com/catering

Jules Catering	(617)-628-5977	https://www.julescatering.com/
Otto Portland	(617)-873-0888	https://www.ottoportland.com/catering
DIG	(617)-904-4344	https://catering.diginn.com/

TRANSPORTATION

What are the transportation options around Cambridge Crossing?

If event attendees are visiting for several days, then utilizing the local transportation may be an option for them in how they get to BMS and around town.

Some transportation options are:

- **The Subway**
 - The subway can take your guests to and from the airport, into downtown, and anywhere in between
 - To get to BMS, the closest stations are Lechmere from the green line and Community College from the Orange Line. The Blue line will take them to and from the airport.
 - The MBTA website has more information about each line and the fares: <https://www.mbta.com/schedules/subway>



- **Taxi Services**

There are some professional taxi services around the area that event attendees can call if they want to be driven anywhere with their luggage.

A couple Taxi service options are:

- **Cabbie's Cab**
 - Phone: 617-547-2222
 - Website: <https://cabbiescab.com/>
- **Green Cab & Yellow Cab of Somerville**
 - Phone: 617-625-5000
 - Website: <https://greenandyellowcab.com>

- **Uber or Lyft**

Event attendees can also use the apps Uber or Lyft on their personal phones to reserve a ride to and from BMS when needed. This is the most popular form of transportation that people from out of state, and from the area, use to get around Boston.